

Kwickset Konstruktion Kits

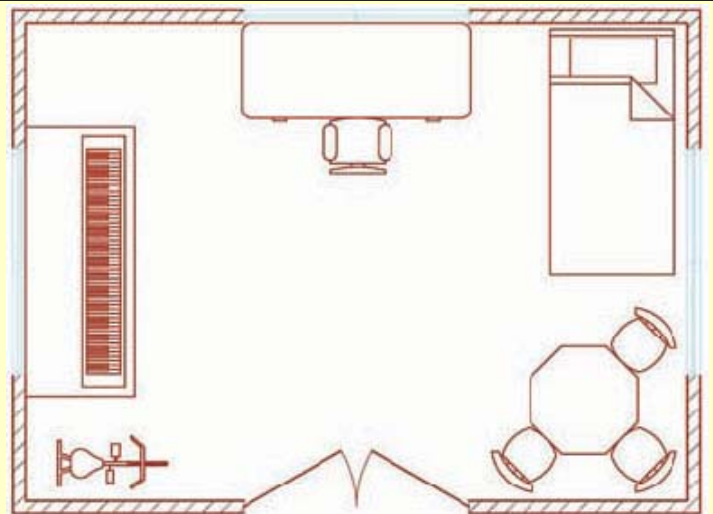
Established 1992

Energy Efficient Homes - Designed for De-Construction

Bungalows, Cottages & Small Houses to Build Yourself

Why Build like This instead of a Square Box?

- These Designs are pre-engineered and very Strong!
- Can be assembled by unskilled Labour!
- All Parts are Bolted & Screwed together!
- You can change the Floor-Plans any time,
- The Shell is self supporting!
- Shipped in a very Compact Package!
- About 3cbm and weighs only about 1.4 ton!
- 9 Kits fit into a 20ft Shipping Container!



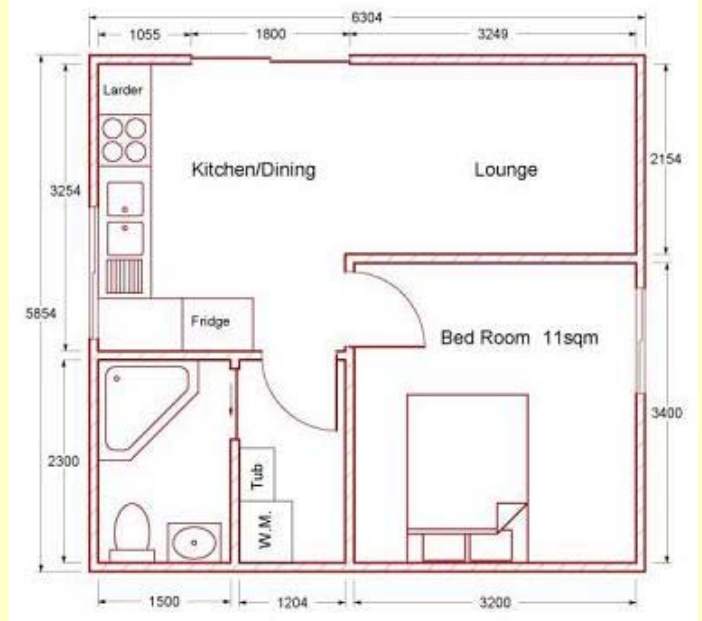
- A Kwickset Konstruction Bungalow Kit contains all the Bolts, Nuts and Screws.
- Base and Header Plates are trenched to receive the Studs and Rafters.
- The Rafters are birds-mouthed to fit into the Plates.
- The Bungalow Side Walls are Pre-assembled and function as an Assembly Aid.
- All Structural Components are cut to size and pre-drilled.
- You don't have to measure, cut or drill anything.
- Just follow the Pictures in the Assembly Manual.
- Plans for your Building Application and a Complete Tool Kit are included.

All you need is a Ladder!

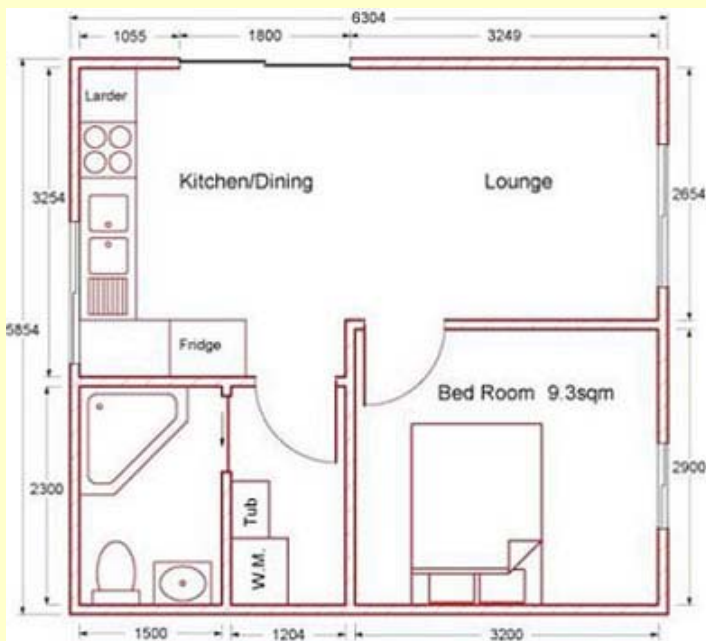


36sqm Bungalow almost finished

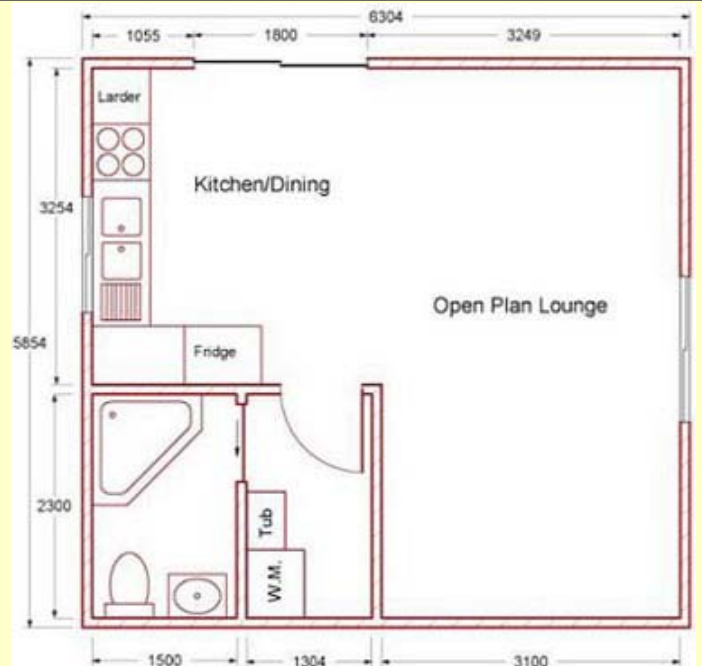
The Kit for this Home was moved in a Hi-Ace Van



Suggested Floor Plan A



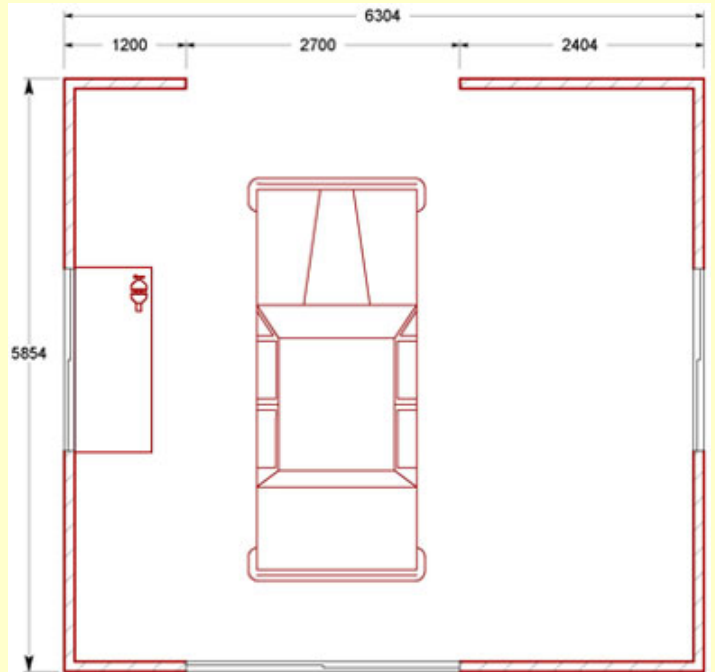
Suggested Floor Plan B



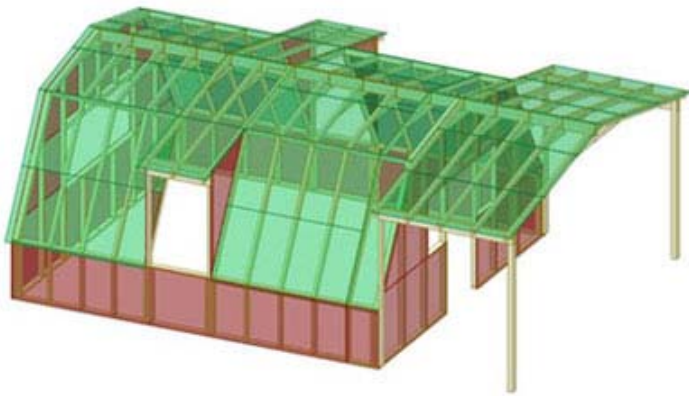
Suggested Floor Plan C



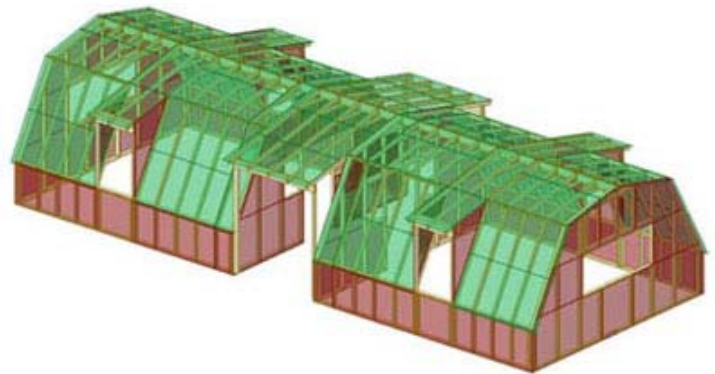
Length 6.3m, Width 5.9m, Height 3.4m,
Foot Print 36sqm, Entrance W 2.79m.
Entrance Position, Width and Length can be varied.
Base Plates are always made from Treated Pine
Weight about 1,400kg, Packaged Volume about 3cbm.
AU\$7,950.- Ex Factory + applicable Taxes



Garage/Workshop Plan 36sqm



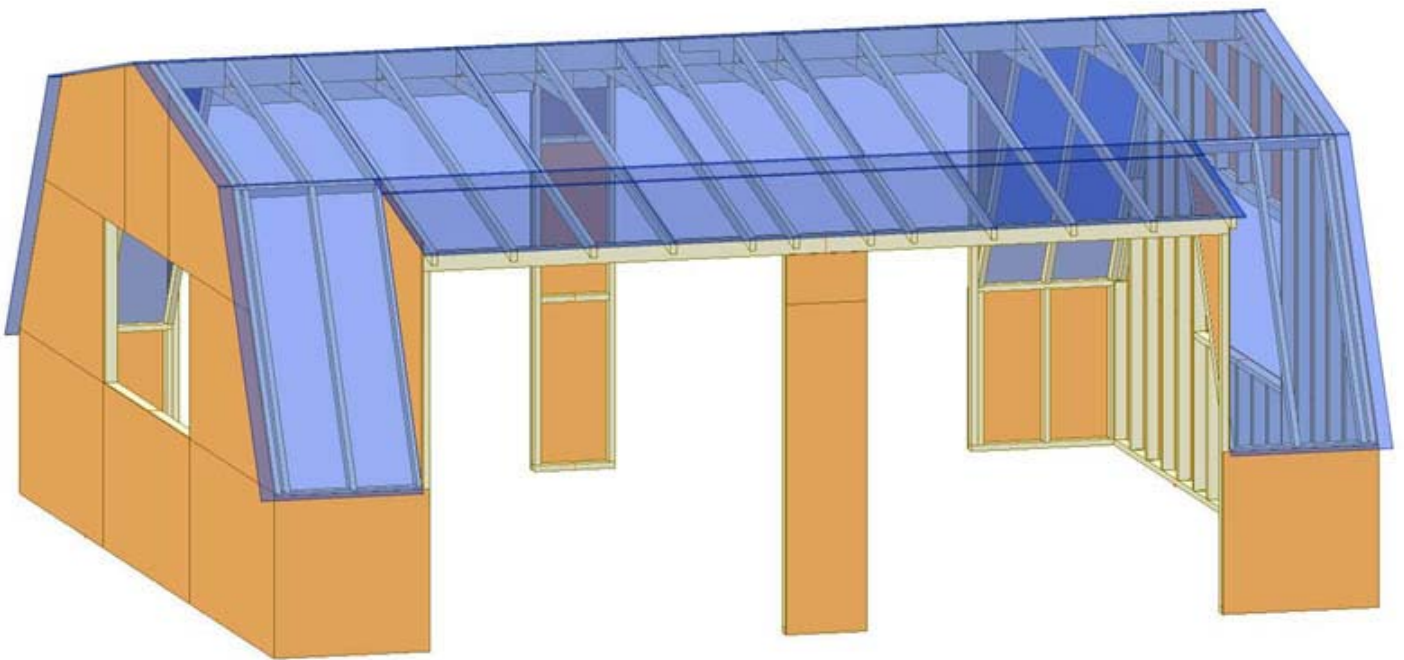
Pre-fabricated Veranda Module as an Optional Extra
Length 2.3m, Width 5.9m, Height 3.4m, Roof 16m²
All Screws, Drawings & Instructions-Weight about
320kg
AU\$1,850.- ex Factory + applicable Taxes



Add another Module
Double your Floor Space
to 72sqm



Yurt/Ger Kit, Footprint 45sqm, Height 4.3m, Diameter 7.8m (10 Sides), Weight 2.5ton, Packaged Volume 6cbm, AU\$13,680 ex Factory + applicable Taxes



**Garage/Bungalow/Granny Flat/Weekender. Length 8.2m, Width 7.04m, Area = 58sqm, Height 3.73m
Entrance H 2.76m, W 2.64m Entrance Positions can be varied. Total Length can be varied.**

Base Plates are always made from Treated Pine

All Screws, Drawings & Instructions included. Weight about 2,000kg. Packaged Volume about 4cbm.

AU\$11,890.- ex Factory + applicable Taxes

[Front Page](#)

[Construction](#)

[Currencies](#)

[Open to PDF](#)

[Contact KKK](#)